



QUICK GUIDE
PROVIDE US YOUR FEED

FTP SERVER

WinSCP

- SEARCH WinSCP ON GOOGLE
- **DOWNLOAD IT!**

IT'S A **FREE** SOFTWARE THAT WILL ALLOW YOU TO ACCESS TO OUR FTP SERVER AND LOCATE YOUR FEED IN IT.



The screenshot shows the WinSCP website's download page for version 5.17. The page has a blue header with the WinSCP logo and navigation links: Home, News, Introduction, Download, Install, Documentation, and Forum. A search bar is located in the top right corner. The main content area is light blue and features the title 'WinSCP 5.17 Download'. Below the title, it states 'WinSCP 5.17 is a major application update. New features and enhancements include:' followed by a bulleted list of updates. At the bottom, there is a prominent green button labeled 'DOWNLOAD WINSCP 5.17.1 (10.6 MB)' with a red arrow pointing to it. To the right of this button is a 'Microsoft' logo and a 'What is this?' link. Further right is a light blue button labeled 'OTHER DOWNLOADS'. Below the main download button, it indicates '210,968 downloads since 2020-02-27'.

WinSCP

Free SFTP, SCP, S3 and FTP client for Windows

Home News Introduction Download Install Documentation Forum

WinSCP 5.17 Download

WinSCP 5.17 is a major application update. New features and enhancements include:

- Improvements to sessions and workspace management, so that WinSCP can now easily restore tabs that were open when it was last closed.
- Hardware-accelerated [AES](#).
- Extension *Archive and Download* to archive remote files and download the archive.
- Improvements to Synchronization checklist window.
- Allowed sorting of find results.
- SSH core upgraded to PuTTY 0.73.
- The binaries are signed with new EV certificate valid until February 2023.
- [List of all changes](#).

DOWNLOAD WINSCP 5.17.1 (10.6 MB)

210,968 downloads since 2020-02-27

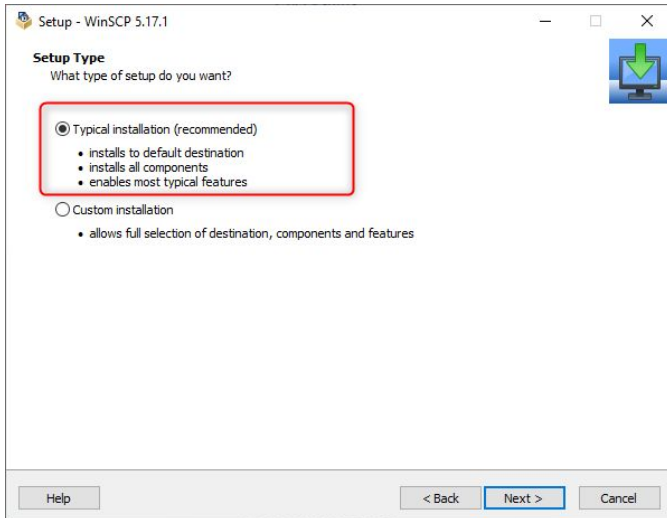
Get it from **Microsoft**

[What is this?](#)

OTHER DOWNLOADS

WinSCP

- **SELECT INSTALL FOR ALL USERS AND TYPICAL INSTALLATION**
- **SELECT THE COMMANDER MODE**



Initial User Settings

Please, select your preferred user interface options.

User interface style

Commander



- two panels (left for local directory, right for remote directory)
- keyboard shortcuts like in Norton Commander (and other similar programs as Total Commander, Midnight Commander...)
- drag & drop to/from both panels

Explorer

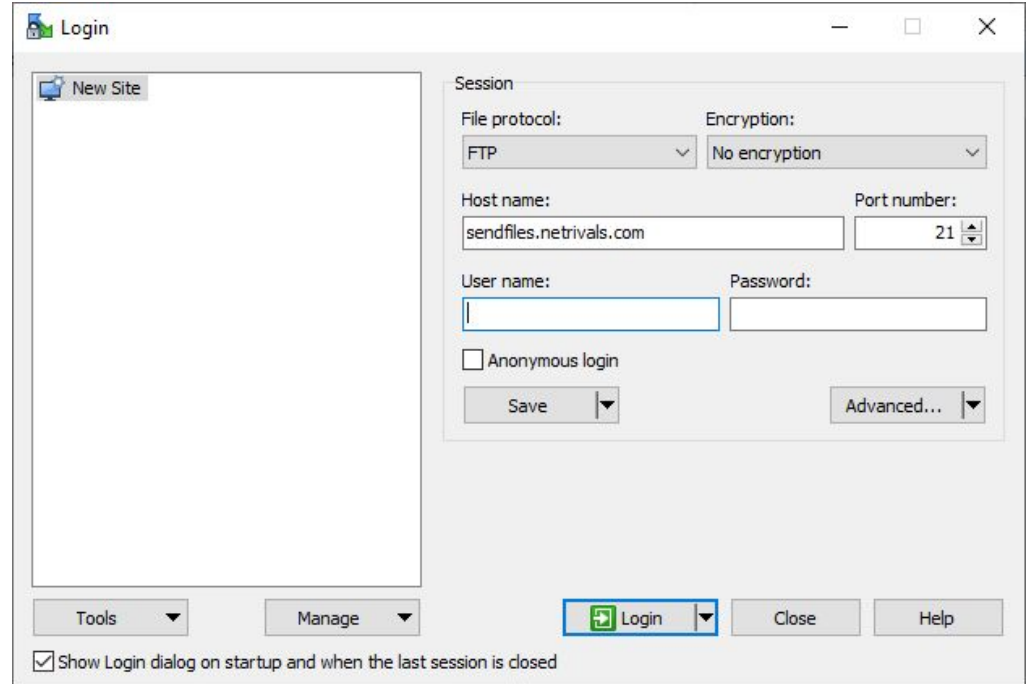


- only remote directory
- keyboard shortcuts like in Windows File Explorer
- drag & drop



WinSCP

- **FILE PROTOCOL : FTP**
- **ENCRYPTION : NO ENCRYPTION**
- **HOST NAME : SENDFILES.NETRIVALS.COM**
- **WE'LL PROVIDE YOU THE USER NAME AND PASSWORD**
- **YOU CAN LOG IN !**



WinSCP

- **IN THE LEFT BOX YOU CAN SELECT YOUR FILE**
- **AND LOCATE IT IN THE RIGHT BOX WHICH REPRESENTS OUR SERVER**
- **YOU CAN ALSO DRAG AND DROP YOUR FILE**
- **IT'S MANDATORY TO ALWAYS KEEP THE SAME NAME FOR THE FILE FOR US TO AUTOMATE THE IMPORT**

